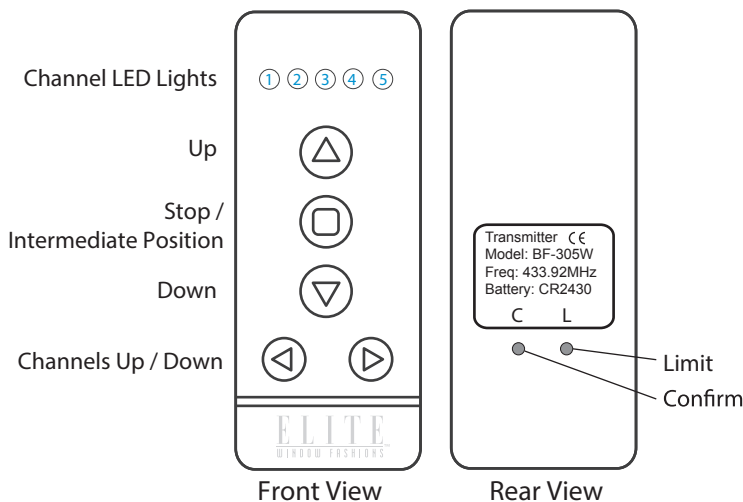


User & Programming Guide

We thank you for your purchase of E-Motion™ automated shades from Elite Window Fashions™. Your shades have been custom programmed by our factory to automatically stop at the top and bottom of your windows. Please consult this guide for proper shade operation and programming.

5 Channel Handheld Remote



Operating Instructions

Raise Shade: Press and hold button for 1-2 seconds.

Lower Shade: Press and hold button for 1-2 seconds.

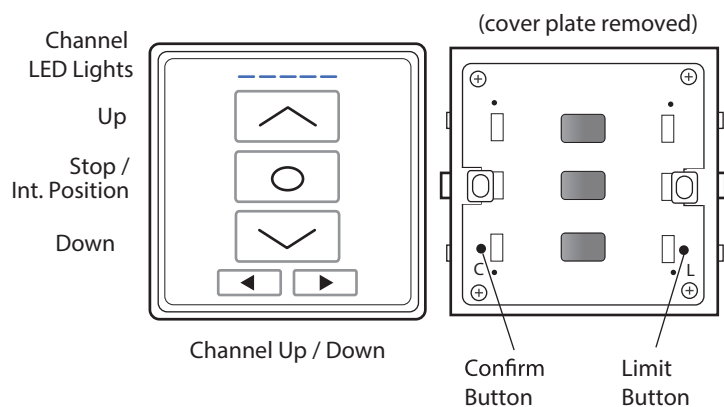
Stop Shade: Press button while shade is in motion.

Intermediate Position: Press button when shade is stopped (must be set by user, see pg. 2 for setup).

Tilt Shade (High-Lite® & Sheer Horizontal Shades only): Press and release or button.

Change Channels: Press or arrows to change channels. The numbered LED lights at the top of the remote indicate the current channel. When all LED lights are on, the remote will operate all shades.

5 Channel Wall Remote



Operating Instructions

Raise Shade: Press and hold button for 1-2 seconds.

Lower Shade: Press and hold button for 1-2 seconds.

Stop Shade: Press button while shade is in motion.

Intermediate Position: Press button when shade is stopped (must be set by user, see pg. 2 for setup).

Tilt Shade (High-Lite® & Sheer Horizontal Shades only): Tap or buttons.

Change Channels: Press or arrows to change channels. The numbered LED lights at the top of the remote indicate the current channel. When all LED lights are on, the remote will operate all shades.

Pairing a New Motor to Your Handheld Remote or Wall Remote

- 1) **Press and hold** the red button on motor for 1-2 seconds until the shade jogs.
- 2) Select the desired channel to which you want to program the motor.
- 3) Using a pen or paperclip, gently press the confirm button marked "C" on the remote. The shade will jog to confirm successful programming.

Operating Shades as Group: By default, when all LED lights on your remote are on, it will control ALL shades within range. If you wish to create your own group on another channel, simply repeat steps 1-3 for additional motors but pair the motors to the same channel.

Removing a Motor From Your Handheld Remote or Wall Remote

(Don't worry, this will not erase the motor's limit positions)

- 1) **Press and hold** the red button on the motor for 4-5 seconds (motor will cycle through two distinct sets of jogs). The motor has now been removed from all paired channels on all remotes.

ATTENTION: Before attempting any of the programming functions in this section, **you must ensure the motor is NOT grouped on the same channel with any other motor(s).**

Follow these steps to isolate a grouped motor for individual programming:

- a) Disconnect the power from other motor(s) by either unplugging the battery wand(s) or DC transformer(s) **OR**
- b) Temporarily removing all other shades from the group channel (see section above for removing a motor).

Reverse Motor Rotation Direction

- 1) Press and hold the "Limit" and "Stop" buttons simultaneously until the motor jogs.

Setting New Upper and Lower Limits

- 1) Select the channel of the shade you want to adjust.
- 2) Press and **hold** the Limit button marked "L" on your remote for 5-6 seconds until the motor jogs.
- 3) Press "down" button to send shade down. **WARNING: ⚠️ MOTOR WILL NOT STOP ON ITS OWN!**
- 4) Press "stop" button once the shade reaches desired position at the window sill. Once stopped, the shade can be finely adjusted in small increments by pressing "up" or "down" buttons.
- 5) When satisfied, use a pen or paperclip to press "Confirm" to set the lower limit stop position. **CONTINUE TO STEP 6.**
- 6) Press "up" button to send shade up. **WARNING: ⚠️ MOTOR WILL NOT STOP ON ITS OWN!**
- 7) Press "stop" button when shade is **2" - 3" from top to prevent damage to the shade.** Once stopped, shade can be finely adjusted in small increments by pressing "up" or "down" buttons.
- 8) When satisfied, use a pen or paperclip to press "Confirm" to set the new upper limit stop position.

Setting A "Favourite" Intermediate Stop Position

- 1) Bring shade to desired intermediate stop position (i.e 50% height, window transom, latch etc).
- 2) Press and hold the "Limit" and "Up" buttons simultaneously until the motor jogs.



follow us on:

