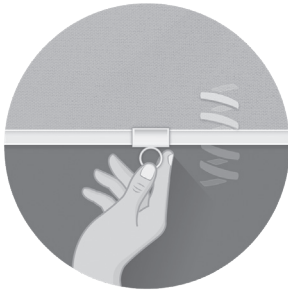


HOW TO OPERATE

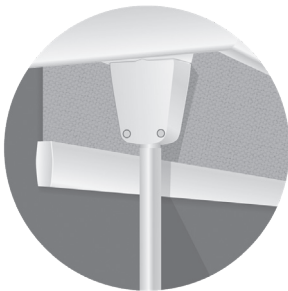
CAUTION: Do not lower the shade past the ordered length because damage may occur to the shade.

**SPRINGDRIVE™**

1. To lower your shade, grasp the bottom bar (handle) from the centre-point and gently pull the shade down to desired position.
2. To raise your shade, give a slight pull on bottom bar handle, and the shade will raise automatically in a gradual and controlled motion, stopping at the top.

TIPS

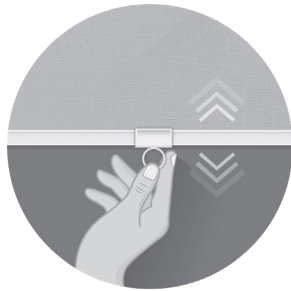
- o Do not pull the fabric beyond the ordered height. Pulling fabric beyond your requested height will expose the tube and could potentially damage your shade.
- o To install the **bottom rail handle**, secure the bottom rail with one hand to prevent the shade from moving. With your other hand, slowly and carefully slide the handle to the centre of the bottom rail.
- o Shade **MUST** be operated from the **centre of the bottom rail** to avoid telescoping and damaging the fabric. If applicable, please ensure the bottom rail handle is positioned in the centre of the shade.

**WANDCONTROL™**

1. To operate your shade, gently pull down on the wand repeatedly until shade reaches desired position.
2. If the shade operates in the opposite direction, securely dock the wand into the housing and twist the handle clockwise or counterclockwise until you hear a click. The click indicates change in direction.

TIPS

- o The wand **MUST** be securely docked into the housing unit when not in use.
- o Pump the wand gradually.
- o Avoid pulling the wand to the end of the cord travel. The abrupt stop may damage the mechanism and potentially loosen the mounting screws over time.
- o When installing into drywall, anchors or plugs **MUST** be used.
- o Only twist the wand when docked in the housing unit. Twisting the cords (in an open position) may damage the mechanism.



FREEMOTION™

1. To lower your shade, grasp the bottom bar (handle) from the centre-point and gently pull the shade down to desired position.
2. To raise your shade, using the bottom bar, gently guide the shade up to desired position.

TIPS

- o Operate the shade gradually and evenly, do not quickly force the shade up or down.
- o Shade **MUST** be operated from the **centre of the bottom rail** to avoid telescoping and damaging the fabric. If applicable, please ensure the bottom rail handle is positioned in the centre of the shade.
- o For High-Lite Shades, pull the bottom rail straight down ensuring it is not tilted forward. Rotating the bottom rail may cause the fabric to cinch or get damaged.
- o For High-Lite shades wider than 60" you **SHOULD ALWAYS** operate the shade with two hands to support the bottom rail and ensure fabric isn't creased or cinched.

Tension Adjustment

*Tension can be adjusted by rotating the dial (located on left side of shade).

- If shade is raising on its own, **loosen** the tension by turning the dial **clockwise**
- If shade is lowering on its own, **increase** tension by turning the dial **counter-clockwise**.

For shades installed with **reverse roll**, dial will be located on the right side of the shade.

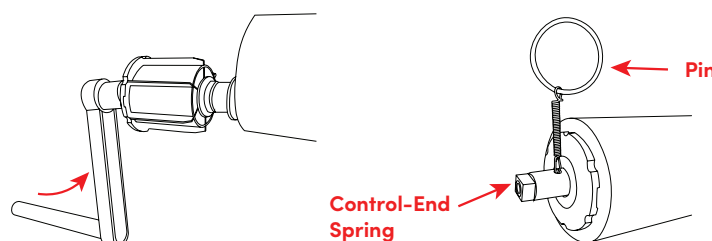
- If shade is raising on its own, **loosen** the tension by turning the dial **counter-clockwise**.
- If shade is lowering on its own, **increase** tension by turning the dial **clockwise**.



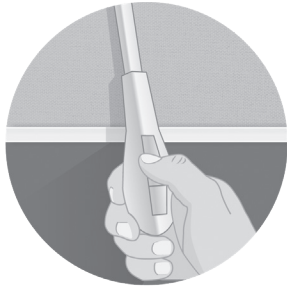
If pin is released prior to control-end installation, spring will release all tension making the shade inoperable. Tension can be rebuilt by rotating the control end (left side) with the winding handle.

- Pull the control-end out of the tube by 3".
- Place the winding handle on the end of the control-end.
- Turn the handle. Estimated number of rotations needed can be found in the chart on the left.
- Remove the handle.
- **WITHOUT PUSHING THE CONTROL-END SPRING**, insert the pin provided in through the small hole on the control-end.
- Put the control-end back in the tube.
- Follow installation instructions to install your shade.

Shade Width	# of Rotations
Up to 17"	16
18" - 24"	20
25" - 48"	18
49" - 60"	20
61" - 72"	15
73" - 84"	12
85" - 96"	15
Wider than 96"	Contact customer service



- After installation slight adjustments may be necessary. Follow the steps under tension adjustment.



E-TOUCH™

* To change between Roller and Sheer Horizontal mode, press the PROGRAM button 3x. The motor will beep 4x in response.

NOTE: when using the PROGRAM button, be sure to press and hold firmly.

FOR ROLLER & HIGH-LITE:

1. Press UP button to raise shade. Shade will automatically stop when it reaches the upper limit.
2. Press DOWN button to lower shade. Shade will automatically stop when it reaches the lower limit.
3. Press STOP to stop your shade while in motion.

FOR SHEER HORIZONTAL:

1. Tap UP button to move the shade up in small increments. Hold UP button for 2 sec. to automatically raise shade.
2. Tap DOWN button to move the shade down in small increments. Hold DOWN button for 2 sec. to automatically lower shade.
3. Press STOP to stop your shade while in motion.

4. Set Middle Stop Position:

- a. Move the shade to desired middle stop position.
- b. Press and hold the PROGRAM & UP buttons for 3 seconds until motor beeps 4x.
- c. To change middle stop position, repeat steps a & b.
- d. Only one middle position is allowed .

5. When stationary, STOP button can be used to move shade to a middle stop position.

6. Reset Shade Limits

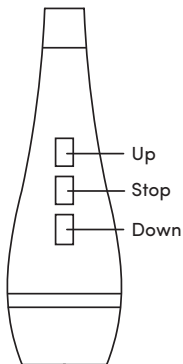
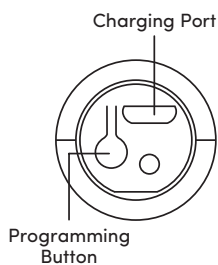
- a. Press and hold PROGRAM button for 5 seconds until motor beeps 4x. BOTH limits are now clear.

7. Setting Upper/Lower Limits (Both limits must be reset)

- a. Set Upper Limit: Raise shade to desired position. Press PROGRAM button, motor will beep
- b. Set Lower Limit: Lower shade to desired position. Press PROGRAM button, motor will beep.

8. Change Motor Rotation

- a. To reverse motor direction, press and hold the PROGRAM & STOP buttons for 2 sec. Shade will beep 3x.



TIPS

- o E-Touch can be charged with any Micro-USB to USB cable and DC 5V 1A charging cube. Do not disconnect the wand from the motor when charging.
- o Motor will take 7 hours to fully charge.